



RFTA Destination 2040

By the Numbers...

40

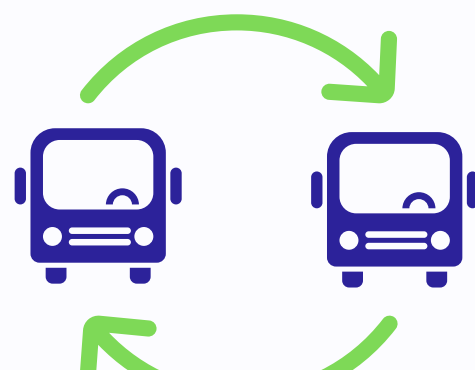
New Buses Purchased

Since 2019 RFTA has purchased approximately 40 new buses.



39% Newer Fleet Age

RFTA's average Fleet Age w/o Destination 2040 would be 13.4 years. And the average Fleet Age with Destination 2040 is 8.15 years. RFTA's Average Fleet Age is 39% newer due to Destination 2040.



12%

Fleet Condition

Our fleet has aged four years yet we have still managed to improve our fleet condition by 12% overall.



89

Additional Parking Spots

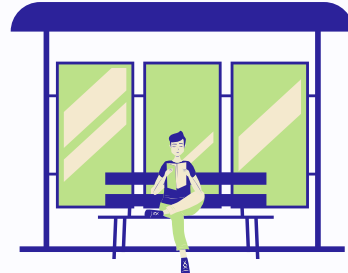
By paving two park and rides we have added 89 additional parking spots.



12

Improved Bus Stops

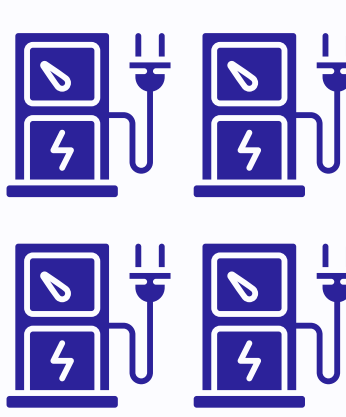
RFTA has improved 12 bus stops with safer access, new shelters, lighting, bus bays, signage and slip lanes.



ONE

New Fuel Farm

We have replaced the outdated Aspen Maintenance Facility Fuel Farm while maintaining full operation.



EV Charging Stations

FOUR new Electric Vehicle Charging stations were built that are able to charge EIGHT busses. PLUS electrical service upgrade to allow for FOUR MORE chargers.

3

Rio Grande Trail Bridge Deck Replacements

We have completed THREE bridge deck replacements including major repairs to Emma Bridge substructure.



528 LINEAR FEET

Rio Grande Trail Repair

We have removed and replaced 528 linear feet of trail and installed root barrier.



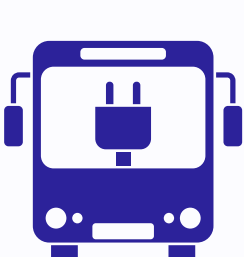
27th Street Parking Expansion

RFTA has purchased 505 27th Street in Glenwood Springs for future park and ride. Conceptual site mockups have been drafted.

Coming Soon



Rubey Park Overhead Charger



Design & Construction of a single use in-line bus charger



220' of Underpasses under SH82 and 27th St